

**ANLET**  
3 LOBES BLOWER

# ANLET ROOTS BLOWERS

## RNew BO Type

# Best Air

~ Introducing a new roots Blower For  
Water treatment ~



**BO** series

Would you like to save energy and reduce  
noise with water treatment ?



**ANLET CO., LTD.**

# BO Type



## ■ Performance chart

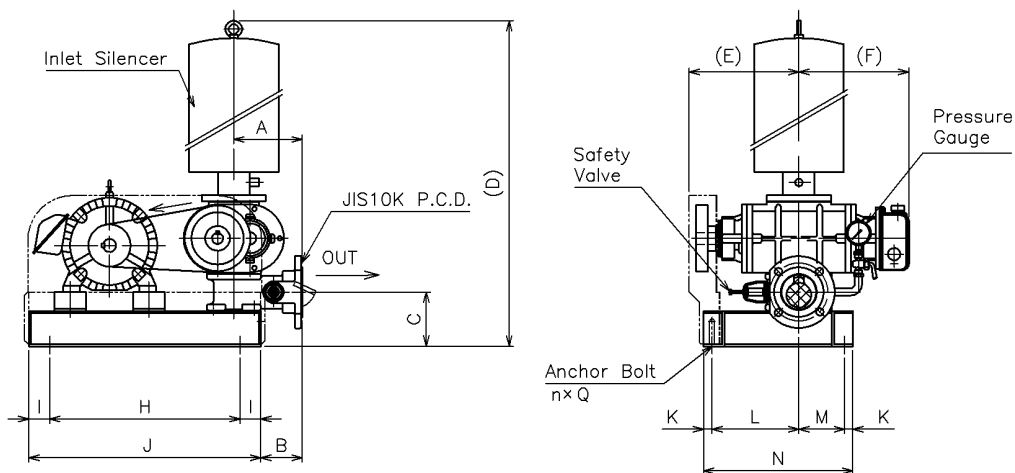
Model	Bore	Speed min <sup>-1</sup>	Standardsuction air capacity (m <sup>3</sup> /min) and power requirements (kW)											
			10kPa		20kPa		30kPa		40kPa		50kPa		60kPa	
			m <sup>3</sup> /min	kW	m <sup>3</sup> /min	kW	m <sup>3</sup> /min	kW	m <sup>3</sup> /min	kW	m <sup>3</sup> /min	kW	m <sup>3</sup> /min	kW
BO50	50A (2B)	1150	1.58	0.5	1.40	0.8	1.24	1.2	1.09	1.5	0.96	1.8	0.83	2.2
		1250	1.76	0.6	1.59	1.0	1.43	1.3	1.28	1.6	1.14	2.0	1.02	2.4
		1350	1.95	0.7	1.77	1.1	1.62	1.5	1.47	1.8	1.33	2.2	1.21	2.6
		1400	2.05	0.7	1.87	1.1	1.71	1.5	1.56	1.9	1.43	2.3	1.30	2.7
		1550	2.33	0.7	2.15	1.2	2.00	1.6	1.85	2.0	1.71	2.4	1.59	2.9
		1700	2.61	0.8	2.44	1.3	2.28	1.8	2.13	2.2	2.00	2.7	1.87	3.2
		1950	3.06	1.0	2.89	1.4	2.73	2.0	2.58	2.5	2.45	3.1	2.32	3.7
		2250	3.60	1.2	3.43	1.9	3.27	2.5	3.12	3.2	2.99	3.9	2.86	4.5
BO65	65A (2½B)	1150	2.12	0.7	1.94	1.1	1.82	1.6	1.72	2.0	1.61	2.5		
		1250	2.32	0.8	2.14	1.2	2.01	1.8	1.89	2.3	1.79	2.8	1.70	3.4
		1400	2.75	0.9	2.57	1.4	2.45	2.0	2.34	2.6	2.28	3.2	2.19	3.8
		1550	3.13	1.1	2.98	1.6	2.87	2.2	2.76	2.9	2.71	3.6	2.60	4.3
		1700	3.46	1.1	3.34	1.7	3.20	2.4	3.12	3.1	3.04	3.8	2.95	4.6
		1950	4.03	1.5	3.90	2.2	3.79	3.0	3.69	3.8	3.62	4.6	3.55	5.5
		2250	4.65	1.7	4.52	2.5	4.39	3.5	4.33	4.3	4.25	5.2	4.18	6.3
		BO80	80A (3B)	1150	3.35	1.0	3.18	1.7	3.00	2.4	2.87	3.1	2.76	3.8
1250	3.73			1.1	3.56	1.8	3.38	2.6	3.24	3.4	3.14	4.2	3.02	5.0
1400	4.29			1.3	4.13	2.1	3.95	3.0	3.81	3.8	3.71	4.7	3.59	5.6
1550	4.86			1.4	4.69	2.3	4.52	3.3	4.38	4.2	4.27	5.2	4.16	6.2
1700	5.43			1.5	5.26	2.5	5.08	3.6	4.95	4.6	4.84	5.7	4.73	6.8
1850	5.97			1.7	5.80	2.8	5.62	4.0	5.49	5.1	5.38	6.3	5.27	7.5
2050	6.69			2.0	6.52	3.2	6.34	4.5	6.21	5.7	6.10	7.1	5.99	8.4
2250	7.41			2.3	7.24	3.6	7.06	5.0	6.93	6.4	6.82	7.9	6.71	9.3
BO100	100A (4B)	1100	4.56	1.4	4.37	2.2	4.20	3.0	4.04	3.9	3.90	4.9	3.75	5.9
		1300	5.59	1.8	5.41	2.6	5.24	3.6	5.08	4.7	4.94	5.9	4.79	7.0
		1450	6.34	2.0	6.16	3.0	6.00	4.1	5.84	5.3	5.69	6.6	5.55	7.9
		1550	6.85	2.1	6.67	3.1	6.50	4.3	6.34	5.6	6.20	7.0	6.06	8.4
		1750	7.82	2.6	7.64	3.7	7.48	5.1	7.32	6.5	7.17	8.1	7.04	9.6
		1950	8.78	2.8	8.60	4.1	8.43	5.6	8.27	7.3	8.13	9.0	7.99	10.8
		2250	10.3	3.4	10.1	5.2	9.93	7.1	9.77	9.0	9.63	10.7	9.49	12.7
		BO125	125A (5B)	1100	6.98	2.1	6.77	3.4	6.56	4.7	6.35	6.1	6.14	7.6
1300	8.60			2.5	8.39	3.9	8.18	5.5	7.97	7.2	7.76	9.0	7.55	10.8
1450	9.82			2.8	9.61	4.4	9.40	6.1	9.19	8.1	8.98	10.1	8.77	12.1
1550	10.6			3.0	10.4	4.7	10.2	6.6	10.0	8.7	9.79	10.8	9.58	13.0
1750	12.3			3.5	12.1	5.4	11.9	7.6	11.7	9.9	11.4	12.3	11.2	14.8
1950	13.9			4.0	13.7	6.2	13.4	8.6	13.2	11.2	13.0	13.9	12.8	16.7
2200	15.8			4.9	15.6	7.6	15.3	10.4	15.1	13.4	14.9	16.2	14.7	19.3

# BO Type

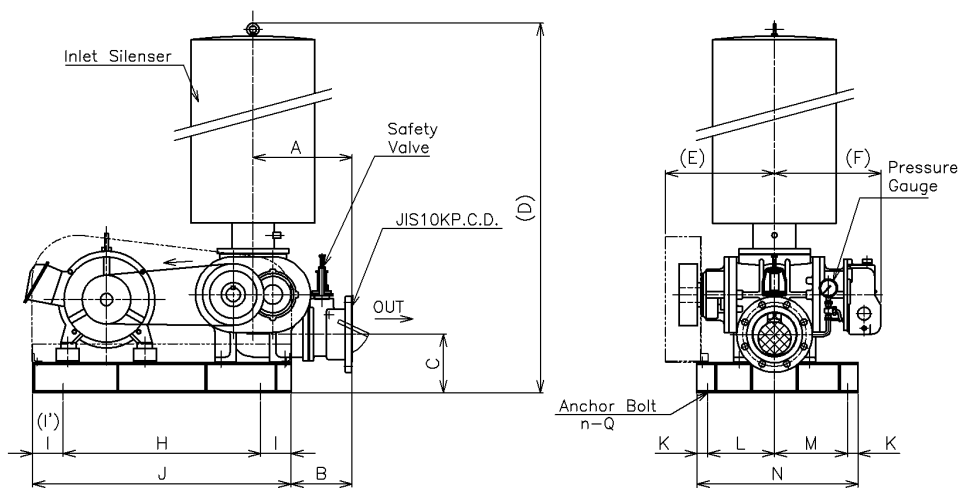


## Outline drawing

### Outline drawing ①



### Outline drawing ②



Type	Bore	A	B	C	D	E	F	H	I(I')	J	K	L	M	N	n	Q	Weight (kg)	No.
BO50	50A	165	100	122	874	230	230	460	50	560	20	190	130	360	4	M12	82	①
BO65	65A	165	100	131	992	265	265	460	50	560	20	210	110	360	4	M12	109	①
BO80	80A	262	152	157	1093	260	253	550	50	650	20	200	180	420	4	M12	130	②
BO100	100A	277	167	182	1124	290	288	600	50(100)	750	25	185	265	500	4	M12	141	②
BO125	125A	327	202	192	1462	358	350	650	100	850	35	220	240	530	4	M12	252	②

※Weight shown covers the blower with standard accessories without motor.

《Standard accessories》 Suction silencer, safety valve, V-pully, V-belt, pressure gauge, base, belt cover, check valve.

Note: Please be aware that the size of the base may differ for special motors (special-configuration motors, heteroelectric motors, motors for exclusive use in inverters, etc) as well as motors with slide bases.

# BO Type

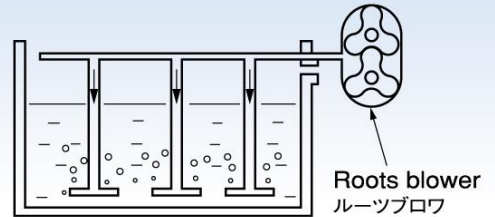


## Energy saving !

	Type	<b>New Type</b>
Model	BS100	<b>BO100</b>
Capacity	5.97m <sup>3</sup> /min	<b>6. 2m<sup>3</sup>/min</b>
Required power	9. 2kW	<b>7. 0kW</b>
Energy saving	—	<b>About 24%</b>

## Water Treatment

### 水処理



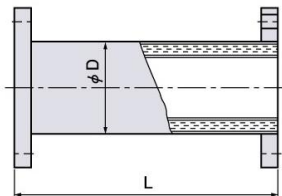
Blowers are used to purify water and stir up sediment at water treatment plants.

水処理プラントの浄化用や沈殿物の攪拌用に使われています。

## Special Accessories

### Delivery silencer ADS

#### 吐出サイレンサ ADS

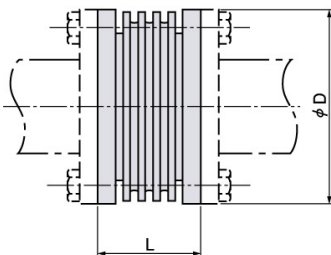


unit 単位 : mm

Model 型式	D	L	Weight 質量 (kg)
ADS20A	43	525	4.0
ADS25A	43	525	4.5
ADS32A	49	525	5.3
ADS40A	61	580	6.5
ADS50A	76	815	9.1
ADS65A	76	785	11.7
ADS80A	89	900	12.6
ADS100A	114	900	17.8
ADS125A	140	1000	27.8
ADS150A	165	1000	31.2
ADS200A	216	1000	42.5
ADS250A	267	1000	72.0
ADS300A	319	1000	88.0

### Flexible joint (rubber) AFD-N

#### フレキシブルジョイント(ゴム製) AFD-N



unit 単位 : mm

Model 型式	D	L	Weight 質量 (kg)
AFD25N	125	100	1.5
AFD32N	135	100	1.6
AFD40N	140	100	1.7
AFD50N	155	100	2.1
AFD65N	175	100	2.4
AFD80N	185	100	2.8
AFD100N	210	100	3.3
AFD125N	250	100	4.5
AFD150N	280	100	10.7
AFD200N	330	150	15.2

Note : Appearance and specifications are subject to change without notice.

※本カタログ記載内容については製品改良のため予告なく変更することがありますので、予めご了承下さい。



# ANLET CO., LTD.

URL : <http://www.anlet.co.jp>

E-mail : [info@anlet.co.jp](mailto:info@anlet.co.jp)